

Datamax Printer Configuration Utility Version 2.02

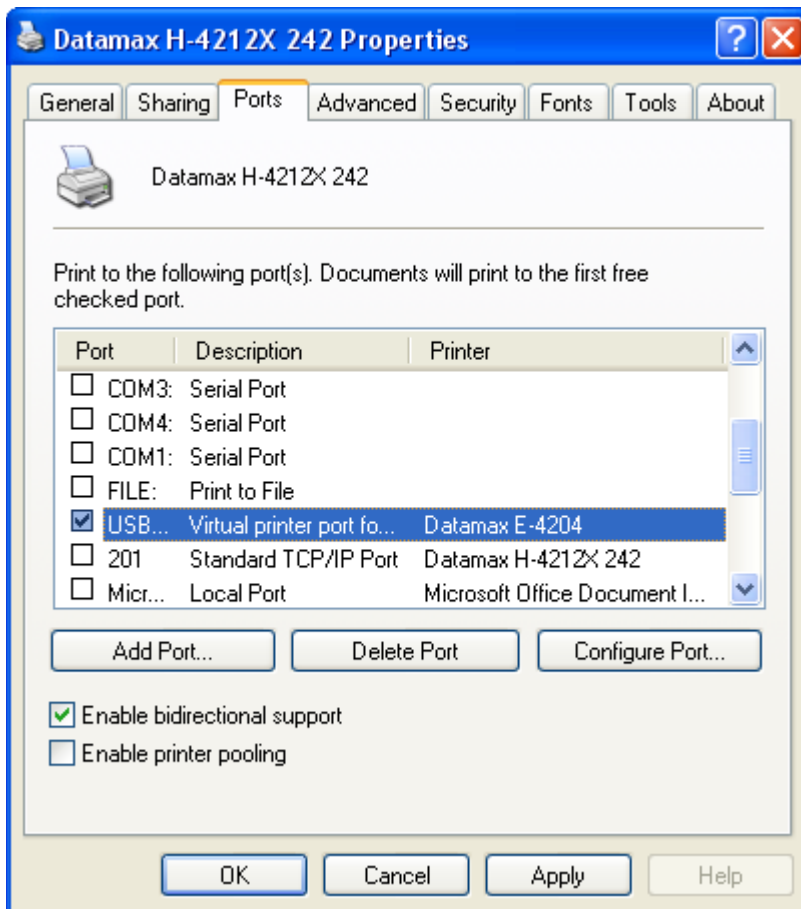
Expanded Host Connections

Datamax Printer Configuration Utility (DPCU) has added support for the Ethernet, WiFi and USB ports. Selecting one of these communication ports will provide all DPCU features including the ability to read the attached printer's configuration.

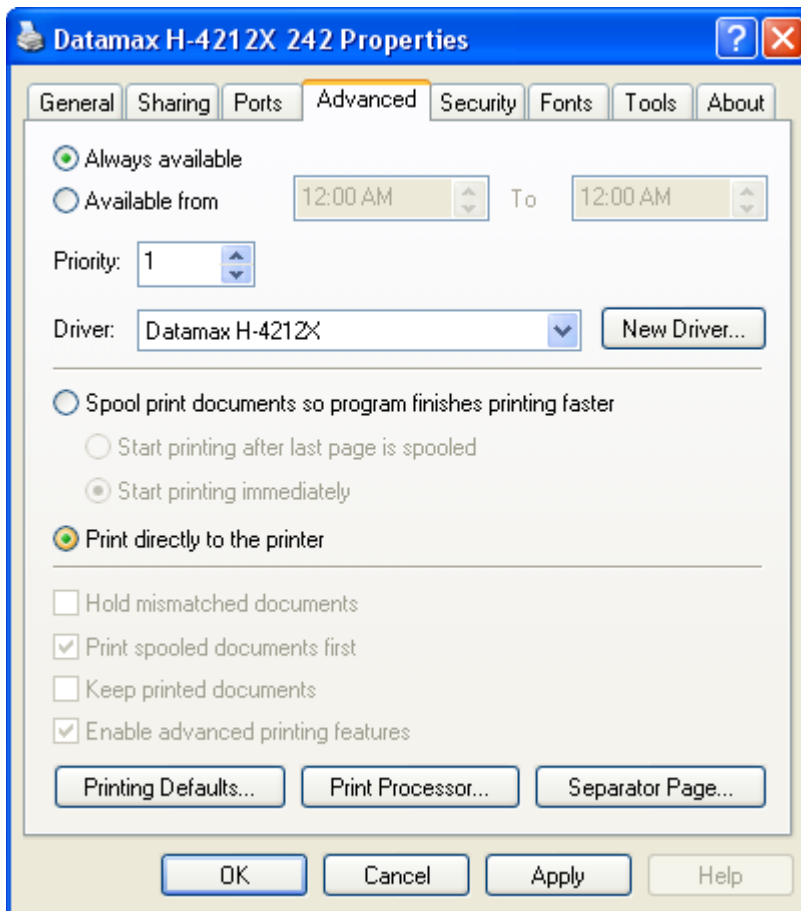
The workstation must have a windows printer driver installed and assigned to the desired port. Datamax recommends using the Seagull Datamax Printer Driver.

Instructions:

- 1) Install the Seagull Datamax Printer Driver.
<ftp://ftp.datamaxcorp.com/Window%20Printer%20Drivers/Seagull/>
- 1a) Assign the desired Port to the Driver.

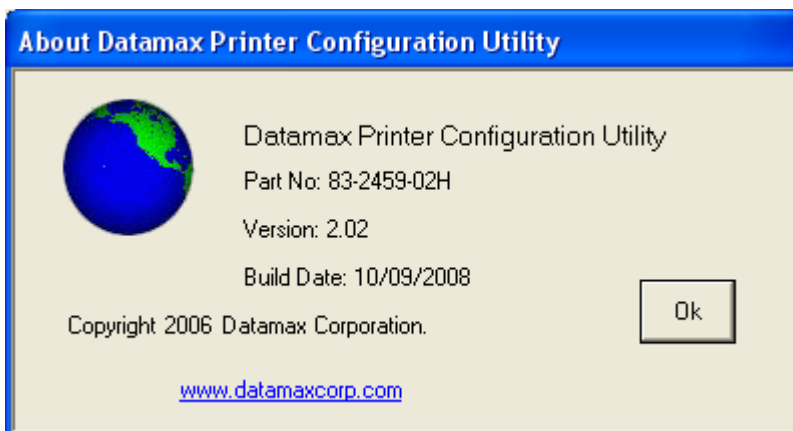


- 1b) Under Advance settings, select "Print directly to the printer".

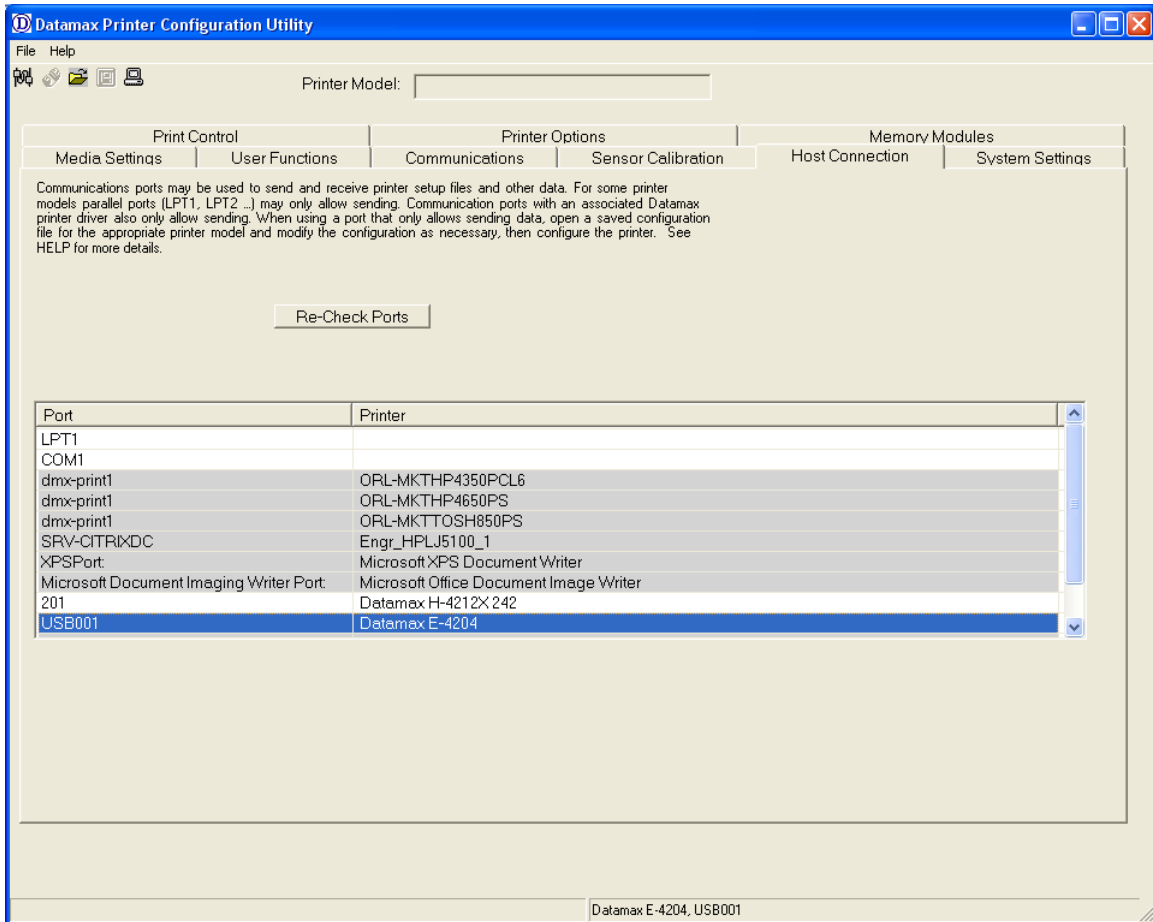


2) Install the DPCU program.

<ftp://ftp.datamaxcorp.com/dmxConfig/>



3) Using the "Host Connection" tab, select the desired communication port / driver.



4) DCPU will operate exactly as the serial and parallel ports.

Hints:

- Have the desired communication port, such as USB001, only assigned to one installed Windows Driver. Assign duplicates to "File".
- Serial and Parallel ports will also work with Windows Drivers installed.